

London Independent Girls' Schools Consortium (Group 2): 11+ Maths 2015

School: London Independent Girls' Schools Consortium (Group 2)

Subject: Maths

Level: 11+

Time: 75 mins

Type: Past Test Paper

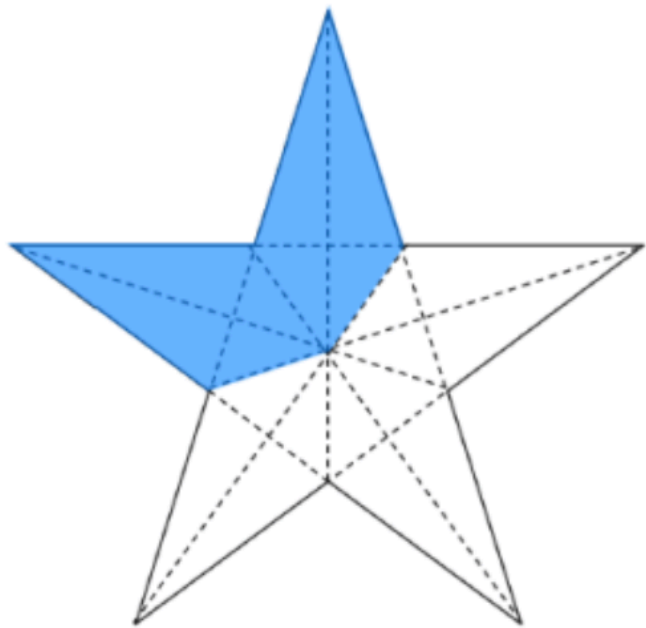
Year in use: 2015

[Download Paper](#) 

[Hide Answers](#)

Q.	Answer	Solution
1.	3023	
2.	1667	
3.	24192	
4.	336	
5.	81	



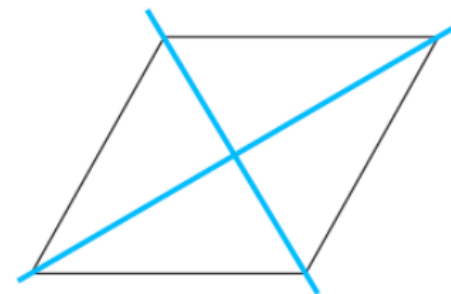
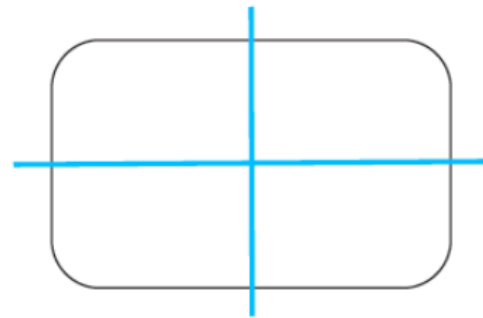
6.	(a) 40.5 (b) 0.7
7.	1.746
8.	87
9.	$\frac{5}{9}$
10.	3.043 , 3.304 , 3.34 , 3.4
11.	<p>(a)</p>  <p>(b) $\frac{4}{9}$</p>
12.	(a) 29 (b) 3 (c) $\frac{1}{4}$

13.	(a) 7000 (b) 15610										
14.	<u>4</u> and <u>14</u>										
(a)	<table border="1"> <thead> <tr> <th>input</th><th>output</th></tr> </thead> <tbody> <tr> <td>2</td><td>0</td></tr> <tr> <td>5</td><td>6</td></tr> <tr> <td>1</td><td>-2</td></tr> <tr> <td>-2</td><td>-8</td></tr> </tbody> </table>	input	output	2	0	5	6	1	-2	-2	-8
input	output										
2	0										
5	6										
1	-2										
-2	-8										
(b)											
15.											
16.	17:13										
17.	£2.90										
18.	14 pizzas										
19.	150 g										
20.	36										
21.	£72.75										



22. (a) 7.5
(b) 37.5
(c) 888
(d) 2700

23.

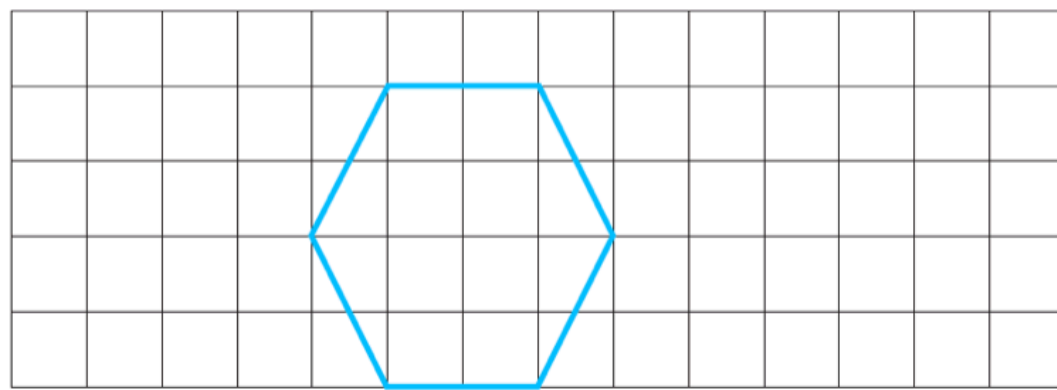


rhombus

24. (a) 70 g
(b) 4.2 oz

25. (a) 27th December 2002
(b) Saturday

26.





(a)

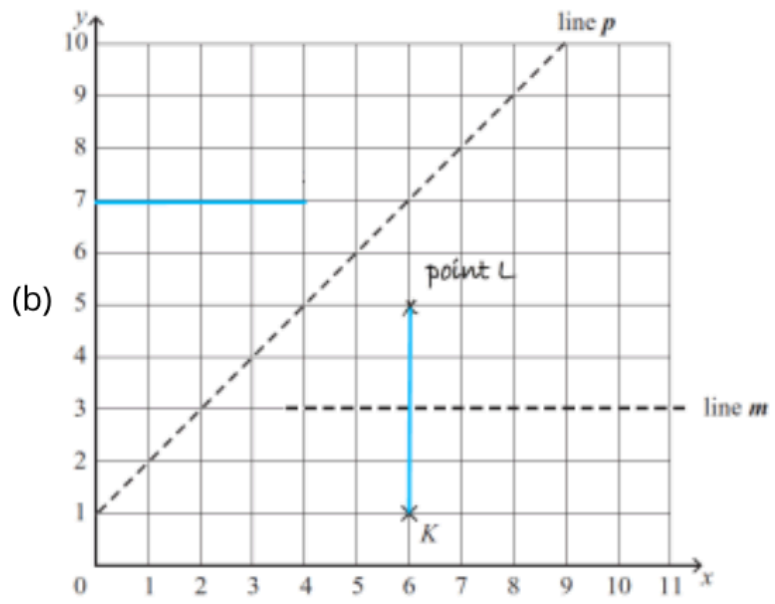
27.

	Spongeton	Bobville	Squareford	Pantsbridge
train 1	10:45	11:10	11:42	12:04
train 2	11:30	11:46	12:18	12:40
train 3	12:15	12:51	13:22	13:45

(b) train 3

(a) (6 , 1)

28.



29.

faces	edges	vertices
12	20	10

(a) 10 and 11

(b) 37

(c) A. equally likely

B. Di most likely to Win

31. 10:40

32. 8 cm

(a) (i) $3\frac{1}{2}$
(ii) 4

33. (b) Annabel is correct because the mode is the value (i.e. the shoe size 4) that occur the most often, NOT the highest number of occurrence (i.e. 12 people).

name	number of correct answers	number of wrong answers	total points
Rebecca	7	13	-5
Safiya	14	6	30
Tosin	4	16	-20
Ursula	8	12	0

35. 43 cm^2

(a) £11.2

(b) 6 mangoes

37. 48



$a = 5$
 $b = 2$
 $c = 10$
 $d = 12$
 $e = 6$
 $f = 23$

38.

(a) 12
(b) 8
(c) 125

39.

(a) 110
(b) 1001
(c) 99 , 101
(d) 212
(e) 10301 , 11111 , 20102

40.

(a) A \rightarrow E \rightarrow D \rightarrow B \rightarrow C \rightarrow F \rightarrow G
(b) 69 min

41.